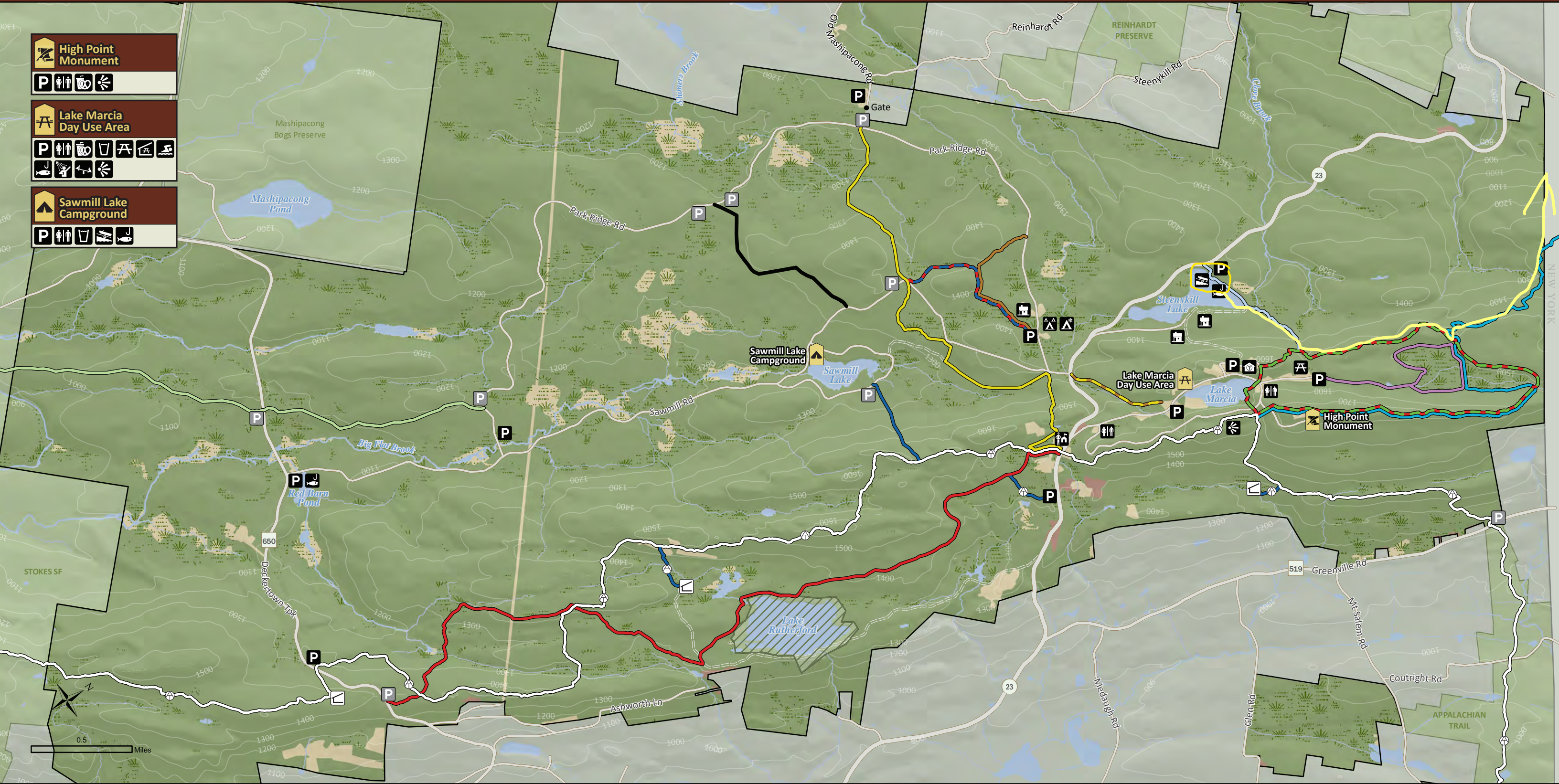


HIGH POINT State Park



Open Field or Grass	Wetland	Ayers Trail (1 mi)	Monument Trail (3.5 mi)	Appalachian Trail	AT Shelter	Fishing	Park Office	Scenic View
Forest	Restricted Area	Blue Dot Trail (0.5 mi)	Old Trail (0.5 mi)	AT Connector Trail	Boat Launch	Group Campground	Picnic Area	Shower
Developed Area		Cedar Swamp Trail (2 mi)	Parker Trail (6.5 mi)	Iris Trail (4.5 mi)	Cabins	Interpretive Center	Picnic Shelter	Swimming
Water		Fuller Trail (0.85 mi)	Shawangunk Ridge Trail (3 mi)	Mashipacong Trail (2.8 mi)	Concession	Parking Lot	Playground	Visitor Contact Station
		Life Trail (0.8 mi)	Steenykill Trail (0.7 mi)		Drinking Water	Pull-off Parking	Restrooms	Winter Camping